



# 智能监控和人为行为分析

## ( Intelligent surveillance and human behavior analysis )

承担2项国家自然科学基金项目和2项国际合作项目，发表SCI检索论文20多篇。

### 1. 图像去模糊和视频去抖动

( Image deblur and Video stabilization )



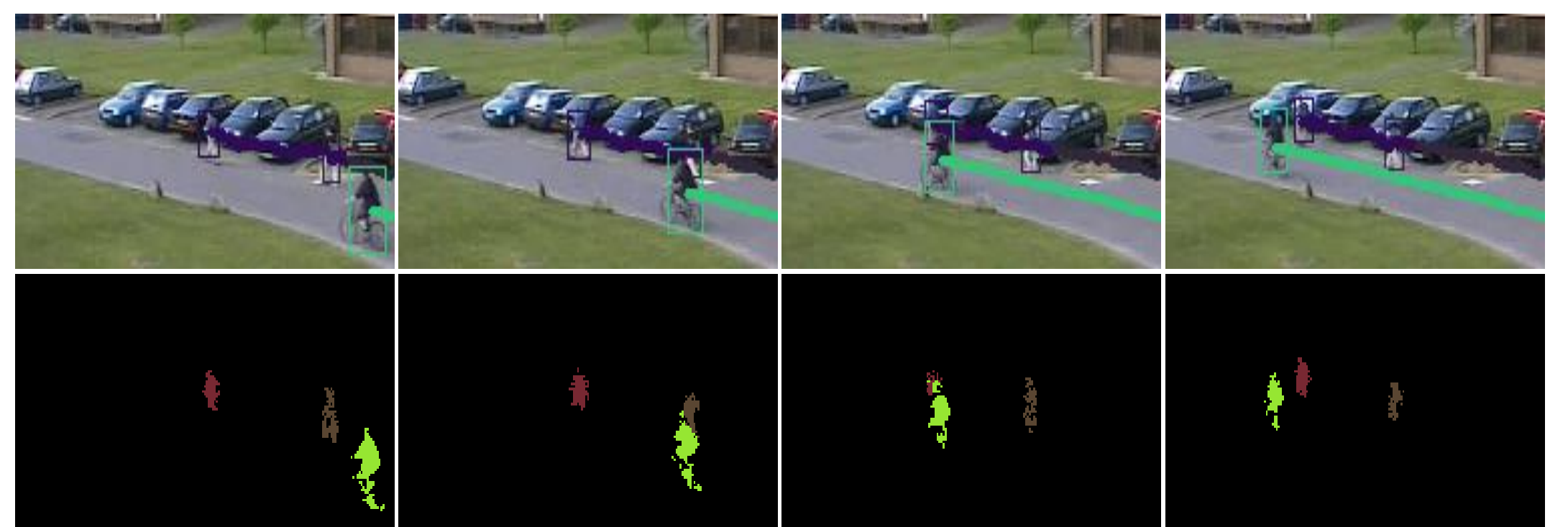
### 2. 视觉显著性检测



### 3. 特定目标检测 ( detection of specific objects )



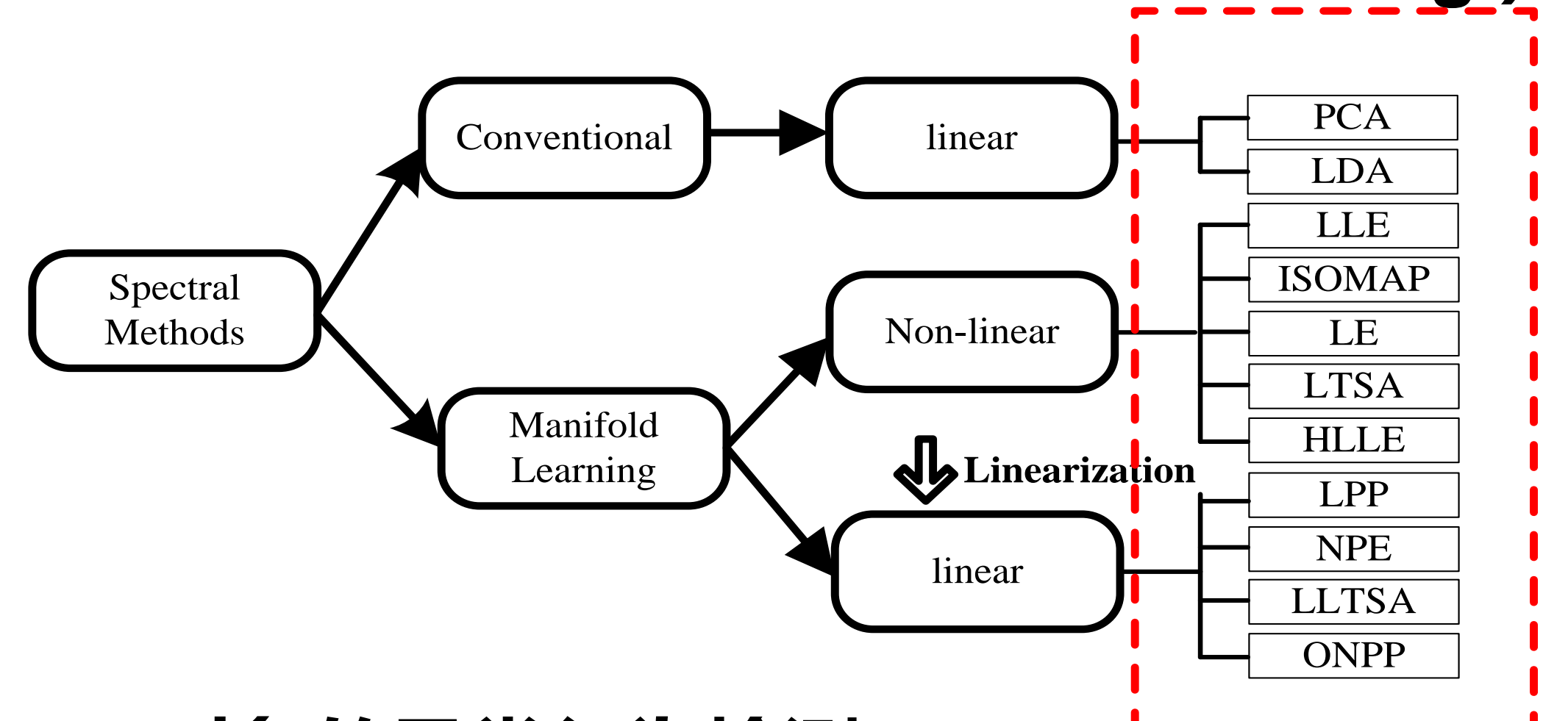
### 4. 视频运动目标的检测 ( detection of moving objects in video )



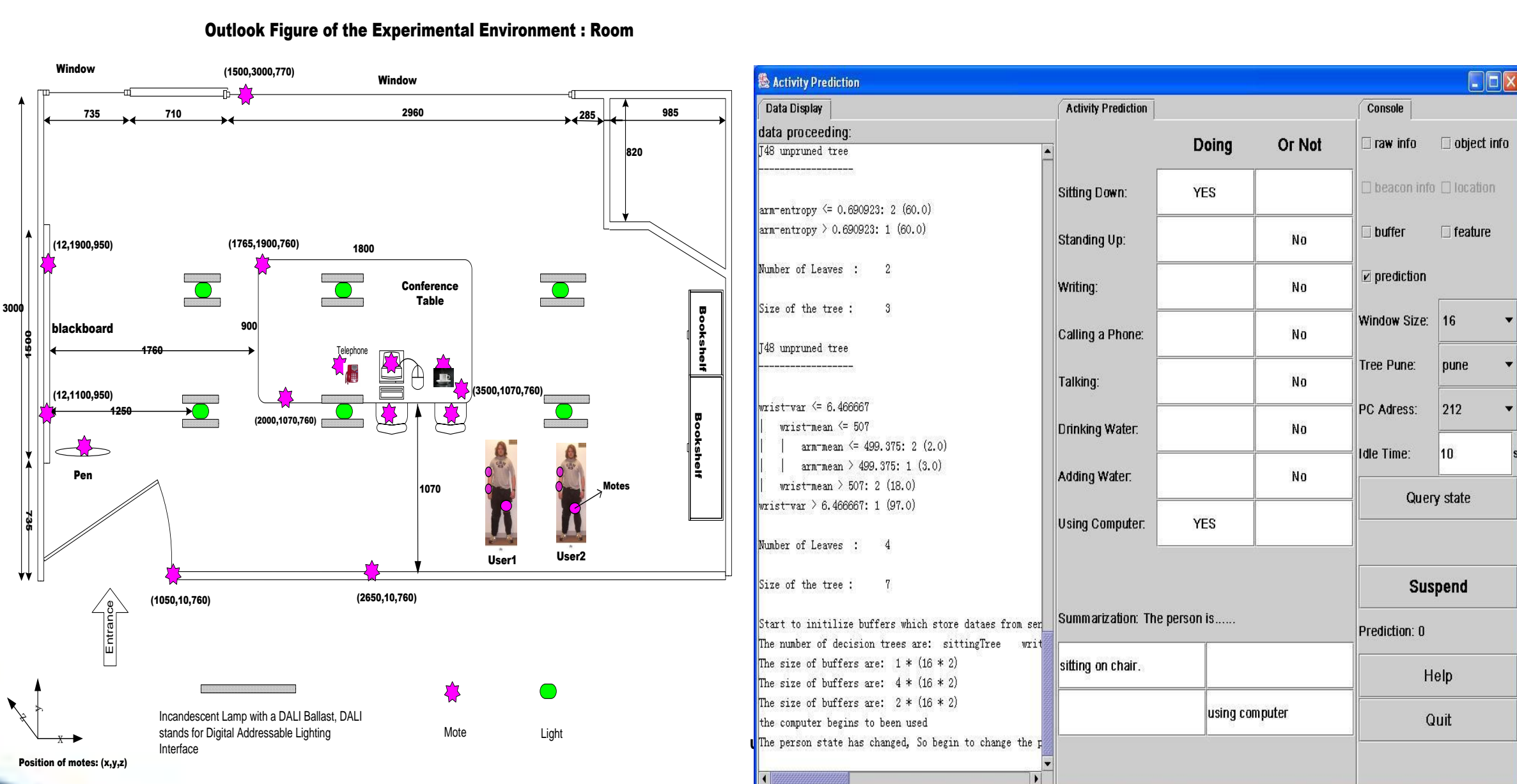
### 5. 稳健视觉跟踪 ( robust visual tracking )



### 6. 基于流形学习的特征降维 ( dimension reduction based on manifold learning )



### 7. 人的动作识别 ( human activity recognition )



### 8. 对象的异常行为检测 ( detection of abnormal behavior of objects )



模式分析和机器智能 (PAMI) 实验室/负责人: 杨杰教授, 博士生导师  
电话:021-34204033; 邮箱: [jieyang@sjtu.edu.cn](mailto:jieyang@sjtu.edu.cn)  
主页: [www.pami.sjtu.edu.cn](http://www.pami.sjtu.edu.cn)